

HUMAX



Quick Installation Guide

Media Sharing Smart Router AC1200 Class with Dual Band

QUANTUM T3A

Model No. HR2214A

Safety and Regulatory Information

This router's user guide contains important safety and license information.

Safety instructions

Please read these instructions before using your product. We do not want you to get hurt or your product to get damaged.

- Do not use your product near water. Keep your product dry. If you need to clean it, do not use a wet towel. Wipe the product with a clean and dry cloth. Never use cleaning fluid or similar chemicals. Do not spray cleaners directly on the product or use forced air to remove dust.
- Do not place your product near any heat sources, such as hot appliances like heaters and radiators, other electronics like computers and stereos, or inside your fireplace. Your product is cool, and you should help it to that way.
- Do not cover the product, or block the airflow to the product with any other objects. Keep the product away from excessive heat and humidity and keep the product free from vibration and dust.
- The product is for indoor use only. Please do not try to use it outside.
- Do not try to open, modify or repair your product. This could cause electric shock or injury to you. Any customer modification voids your authority to operate the equipment and will void your product warranty.
- Only plug in cables and accessories specified and as directed by distributor.
- Protect your product's power cord by allowing it to loosely rest between the product and the power outlet. Do not stretch it or compress it between objects.
- Handle your product with care. Do not drop or shake your product.
- Do not place the product on a soft surface, such as a carpeted floor, which may block the airflow. It is important that the product is placed on an unobstructed, solid surface.

- This product was qualified under test conditions that included the use of the supplied cables between systems components. To ensure regulatory and safety compliance, use only the provided power and interface cables and install them properly.
- Postpone installation until there is no risk of thunderstorm or lightning activity in the area.
- Upon completion of any service or repairs to this product, ask the service technician to perform safety checks to determine that the product is in safe operating condition.

Choking hazards

The product packaging may include plastic bags and tie-wraps. Please dispose of these properly and keep them out of reach of children, as they could present a choking hazard. Keep the product, its cords, and its accessories out of the reach of small children.

Accessories



Quick Installation Guide



AC Power Adaptor



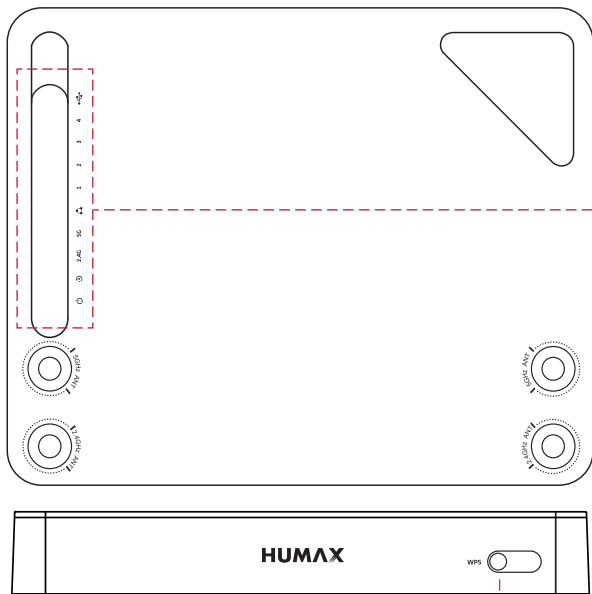
Ethernet Cable

Note:

- Accessories may vary according to area.
- If the accessories are incorrect, missing or damaged, contact your local distributor. Keep the carton, including the original packing materials, in case you need to return the product for repair.

Front Panel

Note: The image may differ from the actual product.



Press the WPS button to activate the wireless protected setup.

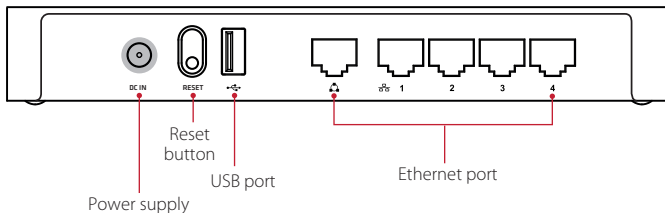


After the router is successfully registered on the network, the LEDs illuminate continuously to indicate that the router is active and fully operational.

LED	Operation	
Power	Blue On	Power is on.
	Off	Power is off.
CPU	Blue On	Power is on.
	Off	Power is off.
2.4G	Blue On	WLAN is enabled on 2.4GHz band.
	Off	WLAN is disabled.
5G	Blue On	WLAN is enabled on 5GHz band.
	Off	WLAN is disabled.
WAN	Blue On	Ethernet cable is connected to the WAN port.
	Blue Blinking	Data is being transmitted through the WAN port.
	Off	Ethernet cable is disconnected.
LAN 1,2,3,4	Blue On	Ethernet cable is connected to the LAN ports.
	Blue Blinking	Data is being transmitted through the LAN ports.
	Off	Ethernet cable is disconnected.
USB	Blue On	USB device is connected to the USB port.
	Off	USB device is disconnected.

Rear Panel

Note: The image may differ from the actual product.



Item	Description
DC IN	Connect the AC power adaptor from the power connector to the wall outlet.
RESET	Keep pressing the reset button for 10 seconds to return to the factory settings.
USB	Connect a USB storage device to share files.
Ethernet port	Connect Ethernet cables to connect local PCs.

Note:

- The reset button is for maintenance purposes only. Do not use unless instructed to do so by your service provider. Doing so may cause you to lose any router settings you have selected.
- Available features and additional services may vary depending on the service provider.

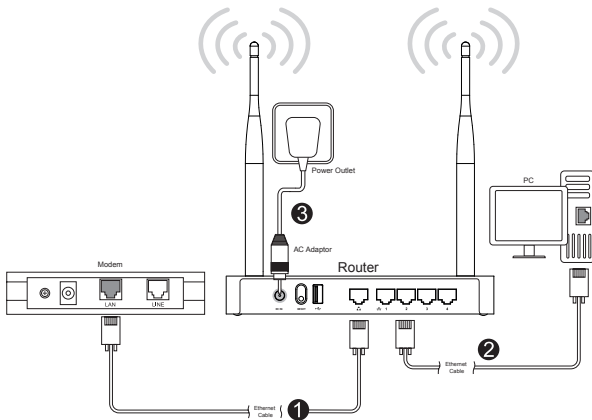
Connections

Your router supports both ADSL and WAN broadband for Internet connection. This section describes how to connect your product to match your networking devices and to gain optimum performance.

If you access Internet by the modem such as ADSL, VDSL, cable and FTTH, follow steps 1, 2 and 3. If you access Internet by WAN broadband, follow steps 2 and 3 to connect directly your router to the residential broadband.

Warning:

- Connect all devices before you plug any power cords into the wall outlet. Always turn off the router and network devices before you connect or disconnect any cables.
- Hazardous electrical voltages can exist on the product and peripheral devices and can be present on any connected cables.



1 Connecting the Router

After connecting your networking devices, you need to connect the router to the network using an Ethernet cable.

Use an Ethernet cable to connect the Modem to the router.

2 Connecting the PCs

Use Ethernet cables to connect your PCs to the router. You can connect up to four PCs directly to the residential gateway. If you use an Ethernet switch or HUB, more than 200 PCs are available.

Note: You may need to check with your service provider in order to connect multiple PCs.

3 Powering On

1. Connect the AC power adaptor from the power connector to the wall outlet.
2. If the power successfully turns on, a blue LED at the front panel turns on.

Note: Use only the AC power adaptor provided in this product. Using other adaptors may damage the product.

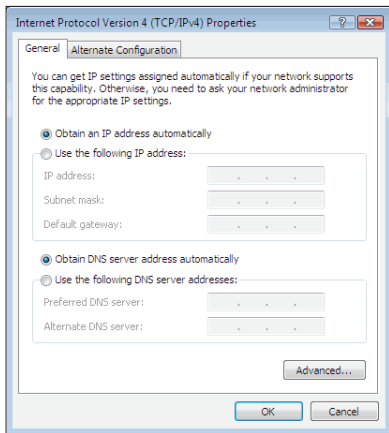
Network Settings

Setting PC

Before you setting up your router, set up your PC to obtain its IP address from DHCP server on the network.

1. Click on your **Start** menu and select **Control Panel**.
2. Click on **Network and Internet**.
3. Click on **Network and Sharing Center**.
4. Click on **Change adapter setting**, and then double click on **Ethernet**.
5. Double click **Internet Protocol Version 4(TCP/IPv4)**.
6. Make sure the radio buttons beside **Obtain an IP address automatically** and **Obtain DNS server address automatically** are selected. Click **OK**.

Note: The settings on Windows 7 are described for your reference.



Setting Router


Once the connection between your PC and router is properly configured, set up your router to access the Internet.

1. Open the web browser.
2. Enter `dearmyrouter.net` or `192.168.1.1` to the address bar, and then press the Enter key.
3. The default ID and password are **admin** and **nnnn**. **nnnn** is the last 4 digits of serial number. Refer to the serial number at the bottom of your product.


Welcome to QUANTUM T3A!


`http://dearmyrouter.net`
`192.168.1.1`

ID **admin**

Password ********* 

Login

 For the default ID and password, see the bottom of the product.

Model : HR2214A	Router Login :
Code : 4-00018	http://dearmyrouter.net
Power Input : 12V=, 2.0A	ID : admin
	Password : nnnn
S/N : CZYYWWnnnnnn	2.4G SSID :
	We Love You So Much_2G!
MAC Address : DCDC8321000001	Password : humax_nnnn
Humax Co., Ltd	5G SSID :
Designed in Republic of Korea	We Love You So Much_5G!
Made in China	Password : humax_nnnn
	<small>※ 비밀번호는 라우터 뒷면의 비밀번호와 동일합니다. Password set: W-Fi</small>

- If you are logged in, the Easy Setup will display. Set the options and enter the password if required. Click **Apply** to save the changes.

Easy Setup
The easy setup will guide you to configure AP for first time.

WAN

Connection Status: **Disconnected**

Connection Type: **Dynamic IP**

Wireless 5GHz

Radio On/Off: **Enabled**

Network Name (SSID): **We Love You So Much_S5G**

Security: **WPA/WPA2-PSK** (Recommend: WPA/WPA2-PSK)

Password: _____

Wireless 2.4GHz

Radio On/Off: **Enabled**

Network Name (SSID): **We Love You So Much_S2G**

Security: **WPA/WPA2-PSK** (Recommend: WPA/WPA2-PSK)

Password: _____

Status Apply

- If you enter all information successfully, the Router Status will display. You can check the configuration information on your network.

HUMAN
HG200A (Firmware Version: V1.2.0)

Home

This page shows the current status and some basic settings of the device.

WAN

Operation Mode	Router Mode
Connection Status	Dynamic IP
IP Address	192.168.1.131
Subnet Mask	255.255.255.252
Gateway	192.168.1.1
DNS Server	192.168.0.100/8.8.8.8
MAC Address	F42B5328C339

LAN

IP Address	192.168.1.1
Subnet Mask	255.255.255.0
DNS Server	Enabled
MAC Address	F42B5328C33A

Wireless 5GHz - 5 devices

Connection Status	Enabled
Network Name (SSID)	We Love You So Much_S5G

Specification

Network	
Wi-Fi Speeds	300+900Mbps
Wireless Standards	IEEE802.11a/b/g/n/ac
Frequency	2.4GHz & 5GHz
Antennas	4 External Antennas
Process	Single Core 660MHz
LAN Ports	4 X 10/100/1G
WAN Ports	1 x 10/100/1G
USB Ports	1 X USB 2.0
Power Supply	
Input Voltage	100 – 240V ~ , 50/60Hz
Type	Adaptor
Power Consumption	12V ↔ 2A
Protection	Separate internal fuse. The input should be protected against lightning.
Physical Specification	
Size (W/H/D)	181 x 26.6 x 147 mm(WxHxD) (Without Cradle)
Weight	Net weight 620g +/- 10g
Operating Temperature	0° to 40°C
Operating Humidity	10% to 90%
Storage Temperature	-20° to 70°C

Note: For more information on your product, visit the web site
http://www.humaxdigital.com/gw/support/QUANTUM_T3A.html